

MODEL 4T25-A TRANSFORMER -

Quick Connect Primaries

Model 4T25-A is a 4 watt, 25 volt transformer use with primary tap at 4 watts, and common primary tap use: .205 X .020 quick lugs. Secondary use: 6" long white wire with .205 quick disconnect female. The input (primary) impedance shall be 150 ohms +/- 10% at 1kHz when connected to the speaker. The output (secondary) impedance shall match the speakers impedance of approximately 8 ohms. The insertion loss: 2.2 dB max 100 - 600 Hz. Model 4T25-A shall be coated with varnish or wax to protect against moisture.

MODEL 4T70-A TRANSFORMER -

Teflon Wire, Primary and Secondary Wires

Model 4T70-A is a 4 watt, 70 volt transformer with primary taps at: common (black), 4 watt (brown), 2 watt (red), and 1 watt (orange). Primary termination: 12" long Teflon type E insulation and 1/4" strip and tin on ends. Secondary taps at: 7" long 22 ga Teflon type E (white) and 1/4" strip and tin on ends. Secondary impedance: 8 ohms. Mounting: horizontal frame: 2" centers. Core size: .5 X .75". Insertion loss: .8 dB. Model 4T70-A has an overall frequency response of 60Hz to 15kHz +/- 1dB.

MODEL 4T70-LUGS TRANSFORMER -

Quick Connect Primaries

Model 4T70-LUGS is a 4 watt, 70 volt transformer with .187 quick disconnect lugs. Secondary taps at: 4, 2, 1, 1/2, 1/4, with impedance of 8 ohms. "C": common is red. "8" is white.

MODEL 5T70-A TRANSFORMER -

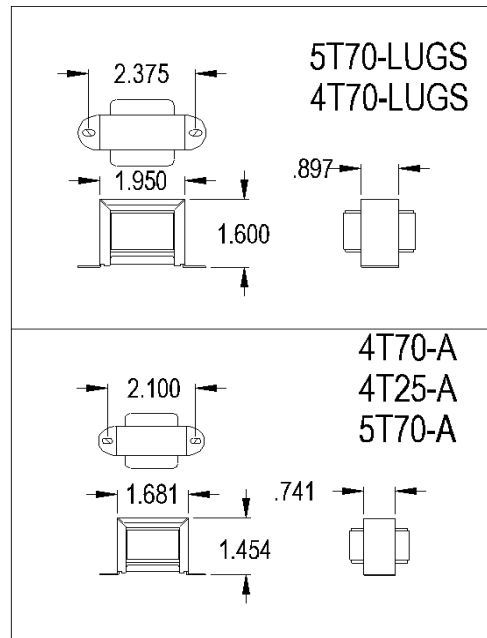
Quick Connect Primaries, Teflon Secondary Wire

Model 5T70-A transformer is a 5 watt, 70 volt transformer with primary taps and secondary taps. Primary taps at: common: 5 watt, 2.50 watt, 1.25 watt, .63 watt, and .31 watt. Primary termination: solder lugs. Core size: .5 X .75". Insertion loss: .8 dB. overall frequency response: 60Hz to 15kHz +/- 1dB. Secondary taps at: 7" long 22 ga Teflon type EE (white) 1/4" strip and tin on ends. Secondary impedance: 8 ohms. Mounting: horizontal frame: 2" centers.

MODEL 5T70-LUGS TRANSFORMER -

Quick Connect Primaries

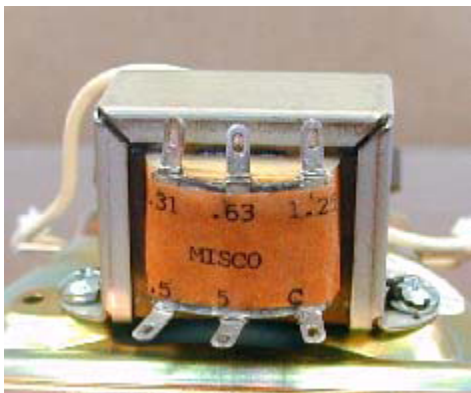
Model 5T70-LUGS is a 5 watt, 70 volt transformer with primary taps and secondary taps. Primary taps at: common: 5 watt, 2.5 watt, 1.25 watt, .62 watt, and .031 watt. All primaries have .205 quick disconnect lugs (mates with amp 640913-1 or equal). Insertion loss. 1dB. Secondary taps at: 6" long white wires with .205 female quick connect attached.



MODEL NUMBER	PRIMARY VOLTAGE	MAX POWER	PRIMARY TAPS	SECONDARY IMPEDANCE	INSERTION LOSS	CORE SIZE	FREQ RES
4T25-A	25	4 WATTS	4	8 OHMS	2.2 dB	5/8" x 1/2"	100 - 10KHZ +/-1.5 dB
4T70-A	70	4 WATTS	4, 2, 1,	8 OHMS	.8 dB	1/2" x 3/4"	60 - 15KHZ +/- 1 dB
4T70-LUGS	70	4 WATTS	4, 2, 1, .5, .25	8 OHMS	1dB	5/8" x 1/2"	60 - 15KHZ +/- 1 dB
5T70-A	70	5 WATTS	5, 2.5, 1.25, .63, .31	8 OHMS	.8 dB	5/8" x 5/8"	60 - 15KHZ +/- 1 dB
5T70-LUGS	70	5 WATTS	5, 2.5, 1.25, .63, .31	8 OHMS	1 dB	1/2" x 3/4"	100 - 10KHZ +/-1.5 dB



P/N 5T70-A 70 VOLT TRANSFORMER



TAPS AT:
COMMON
5 WATT
2.5 WATT
1.25 WATT
.063 WATT
.031 WATT

ALL PRIMARY CONNECTIONS HAVE SOLDER LUGS
INSERTION LOSS: 0.8 dB

SECONDARY IMPEDANCE: 8 OHMS
SECONDARY FREQUENCY RESPONSE: 60 Hz TO 15 kHz
SECONDARY WIRES: 7" LONG WHITE, TEFLON COAT, TYPE EE, 22 GA
CORE SIZE: .5" X .75"

MOUNTING: 2" HOLE CENTERS

D.C. Resistance Specifications:

PRIMARY

.31 watt - 623.0 ohms \pm 10%

.62 watt - 315.7 ohms \pm 10%

1.25 watt - 96.8 ohms \pm 10%

2.5 watt - 59.5 ohms \pm 10%

5 watt - 31.3 ohms \pm 10%

SECONDARY

8 ohm - .344 ohms \pm 10%

Additional features:

28 GA STRESS LEADS ADDED TO 2.5W, 5W AND C TAPS TO PREVENT WIRES FROM BREAKING.

5 MIL MYLAR PAD PLACED OVER PRIMARY SECTION.

Note to cable installer:

This transformer uses very fine wire to connect to primary solder lugs. Extreme care must be taken in bending the lugs to not break this wire. A two pliers system must be used which immobilizes the lug prior to bending it. In addition, excess solder or heat used when soldering to the lugs can cause solder to flow behind the lugs and create shorts or opens.